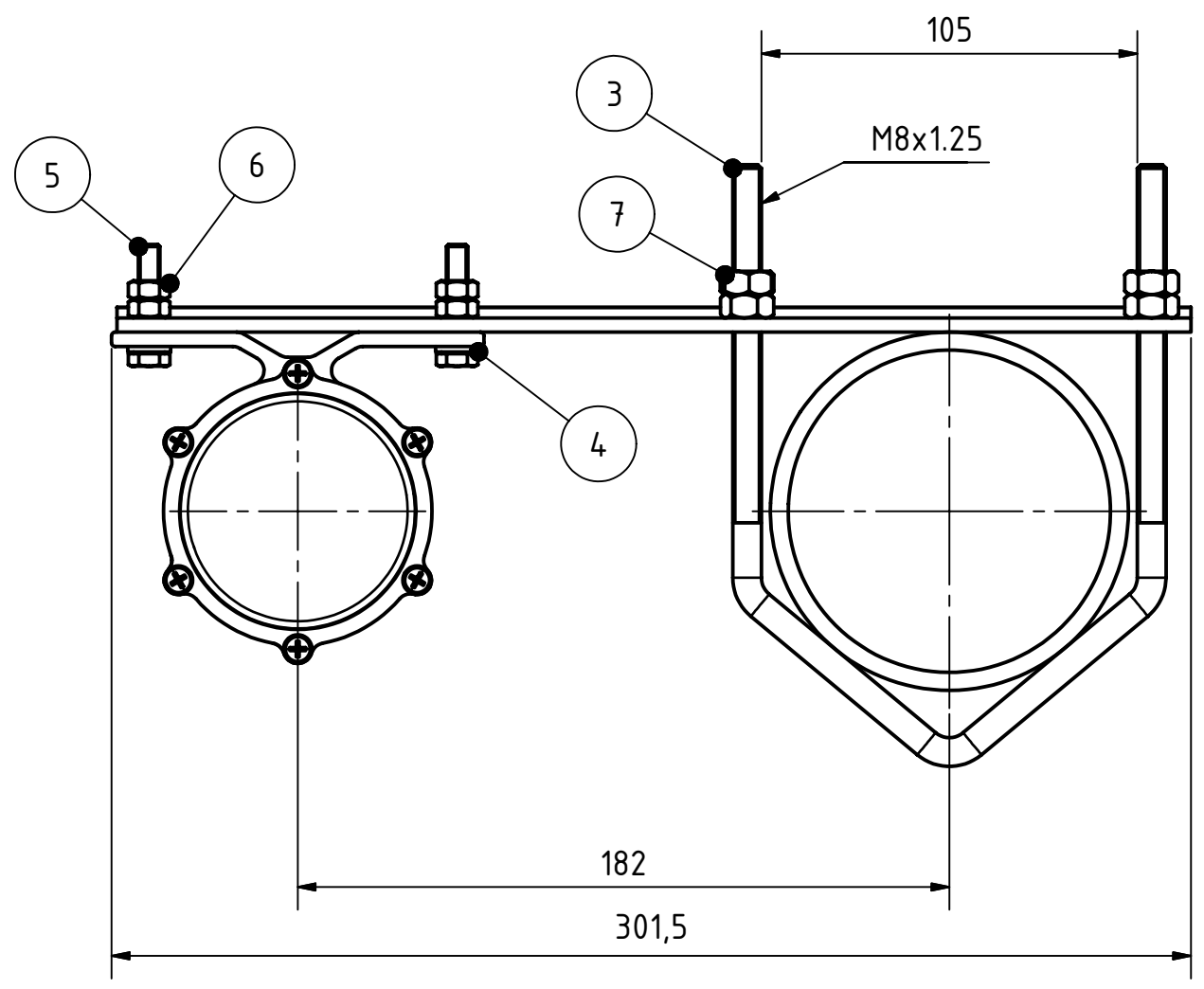
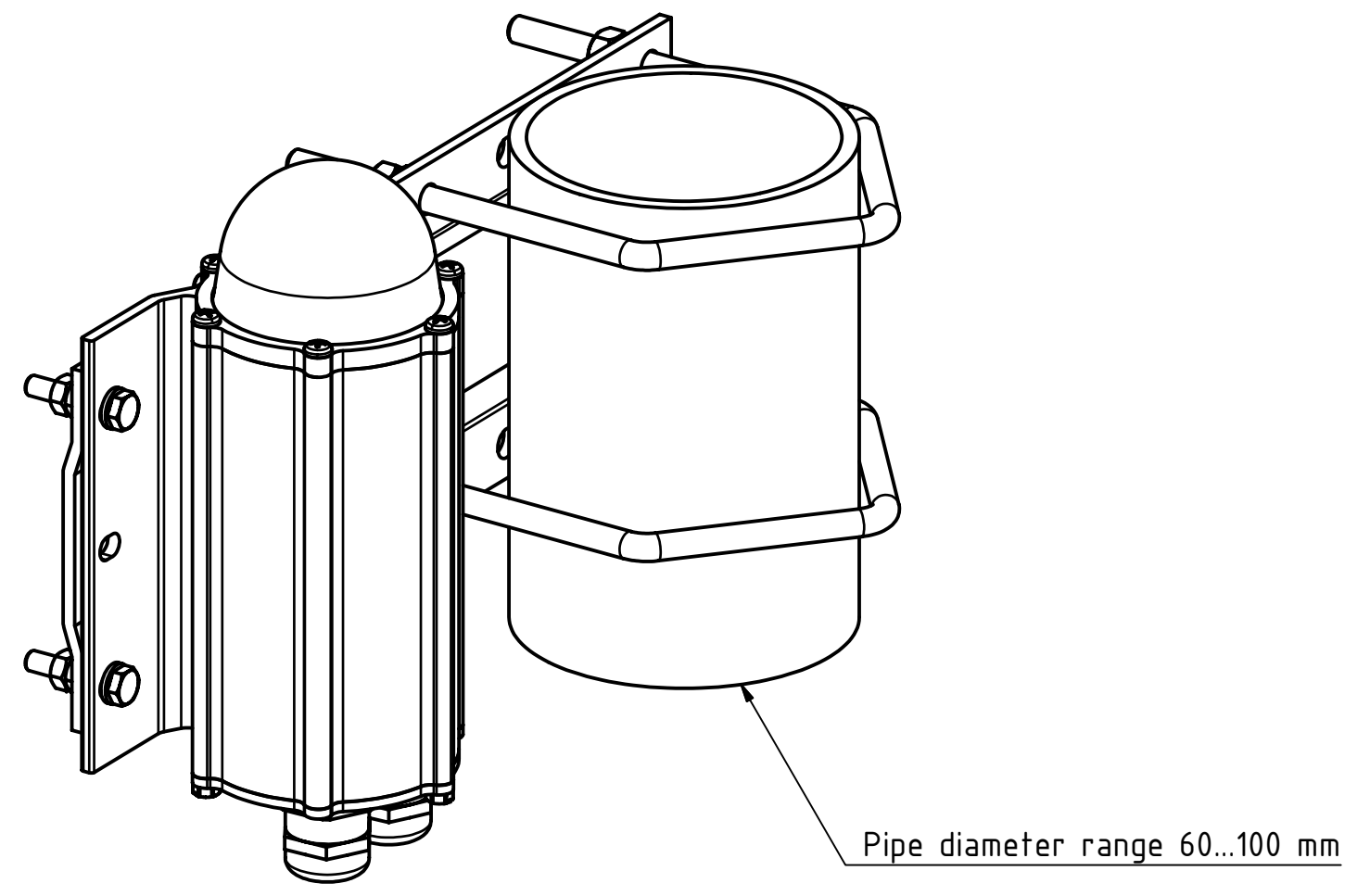
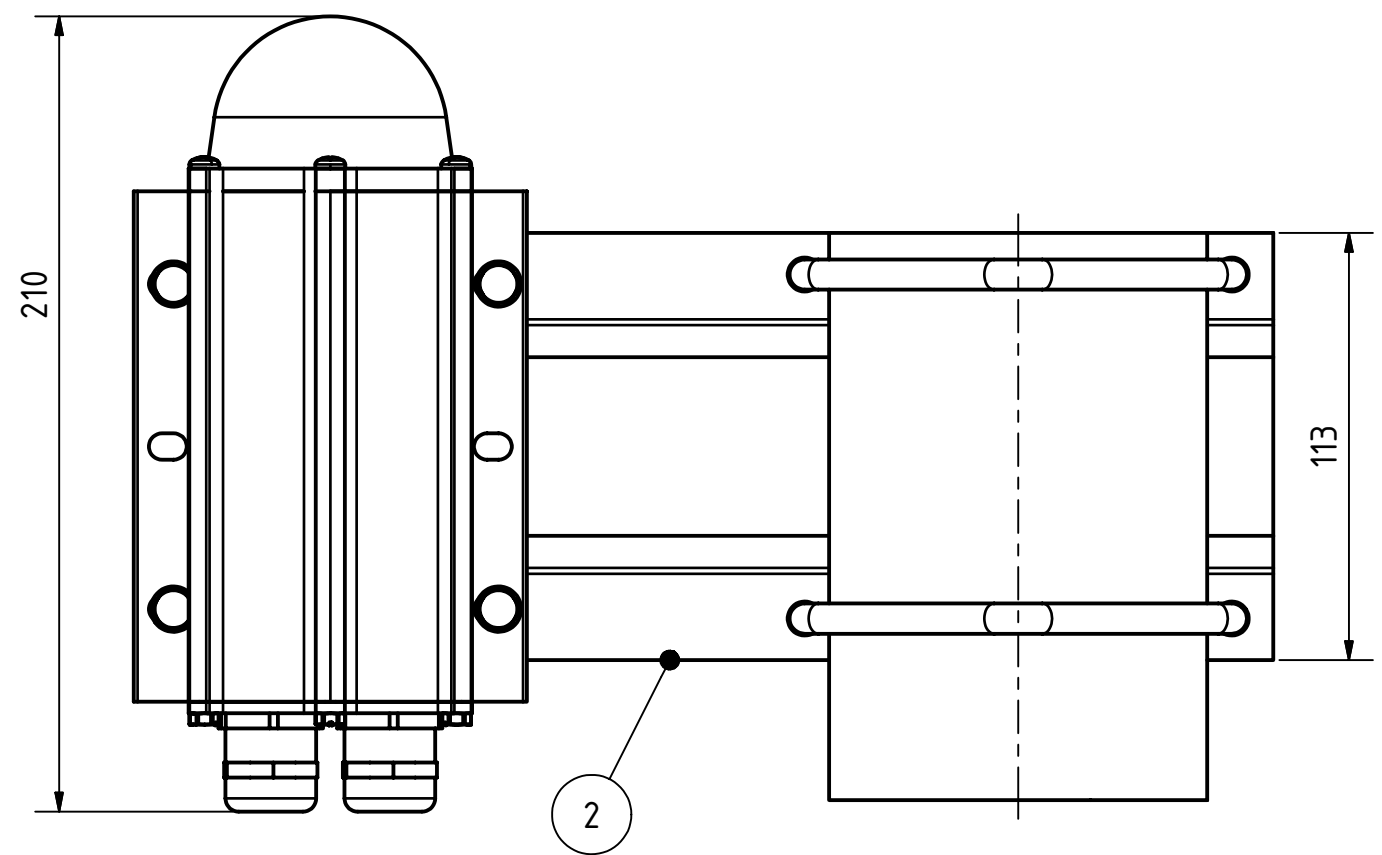


TÄMÄ PIIRUSTUS ON OBELUX OY:N OMAISUUTTA, EIKÄ SITÄ SAA ILMAN LUPAAMME JÄLJENTÄÄ TAI LUOVUTTA A KOLMANNELLE OSAPUOLELLE.  
 WE OBELUX OY ARE THE OWNER OF THIS DOCUMENT WHICH MUST NOT, WITHOUT OUR PERMISSION, BE COPIED OR GIVEN TO A THIRD PARTY.

MOUNTING SET ORDER CODE: OBELUX MS-EV100

MS = Mounting Set  
 EV100 = Extended Vertical with M8 U-bolt



| BILL OF MATERIAL |     |             |                |                    |
|------------------|-----|-------------|----------------|--------------------|
| ITEM             | QTY | PART NUMBER | DESCRIPTION    | MATERIAL           |
| 2                | 1   | X001131     | BRACKET        | Aluminum, Anodized |
| 4                | 4   | X000139     | WASHER         | Type AISI 316      |
| 6                | 8   | X001005     | HEX NUT M6     | Type AISI 316      |
| 7                | 8   | X000131     | HEX NUT M8     | Type AISI 316      |
| 5                | 4   | X001132     | HEX BOLT M6x30 | Type AISI 316      |
| 3                | 2   | X000235     | U-BOLT M8      | AISI 316           |

|  |   |   |    |                 |     |                  |                |                   |                   |                    |     |
|--|---|---|----|-----------------|-----|------------------|----------------|-------------------|-------------------|--------------------|-----|
| FIRST ANGLE  | MERKITSEMATTOMAT KONEISTUJUTOLERANSSIT SFS EN 22768-m<br>UNMARKED MACHINING TOLERANCES ACC. TO SFS EN 22768-m |   |    |                 |     | 0.5<X≤3<br>± 0.1 | 3<X≤6<br>± 0.1 | 6<X≤30<br>± 0.2   | 30<X≤120<br>± 0.3 | 120<X≤400<br>± 0.5 |     |
|  | PAIND<br>WEIGHT   | 1 | KG | SIUHDE<br>SCALE | 1:2 | PVM<br>DATE      | 07.11.2005     | SUUNN<br>DESIGNED | ATu               | HYV<br>APPR        | VLa |
| OBELUX MS-EV100<br>ASENNUSSARJA PYSTYPUTKEEN JATKOLEVYLLÄ<br>EXTENDED MOUNTING SET FOR VERTICAL PIPE |   |   |    |                 |     |                  |                | VANHA<br>OLD NO   | -                 | UHISI<br>NEW NO    | -   |
|  |   |   |    |                 |     |                  |                | A3                | A1000800          |                    |     |

|        |                |                     |                               |            |                             |
|--------|----------------|---------------------|-------------------------------|------------|-----------------------------|
| OBELUX | WWW.OBELUX.COM | HELSINKI<br>FINLAND | GENERATED WITH<br>INVENTOR 10 | SHEET<br>1 | MICROFILM<br>MIILITUS ISSUE |
|--------|----------------|---------------------|-------------------------------|------------|-----------------------------|