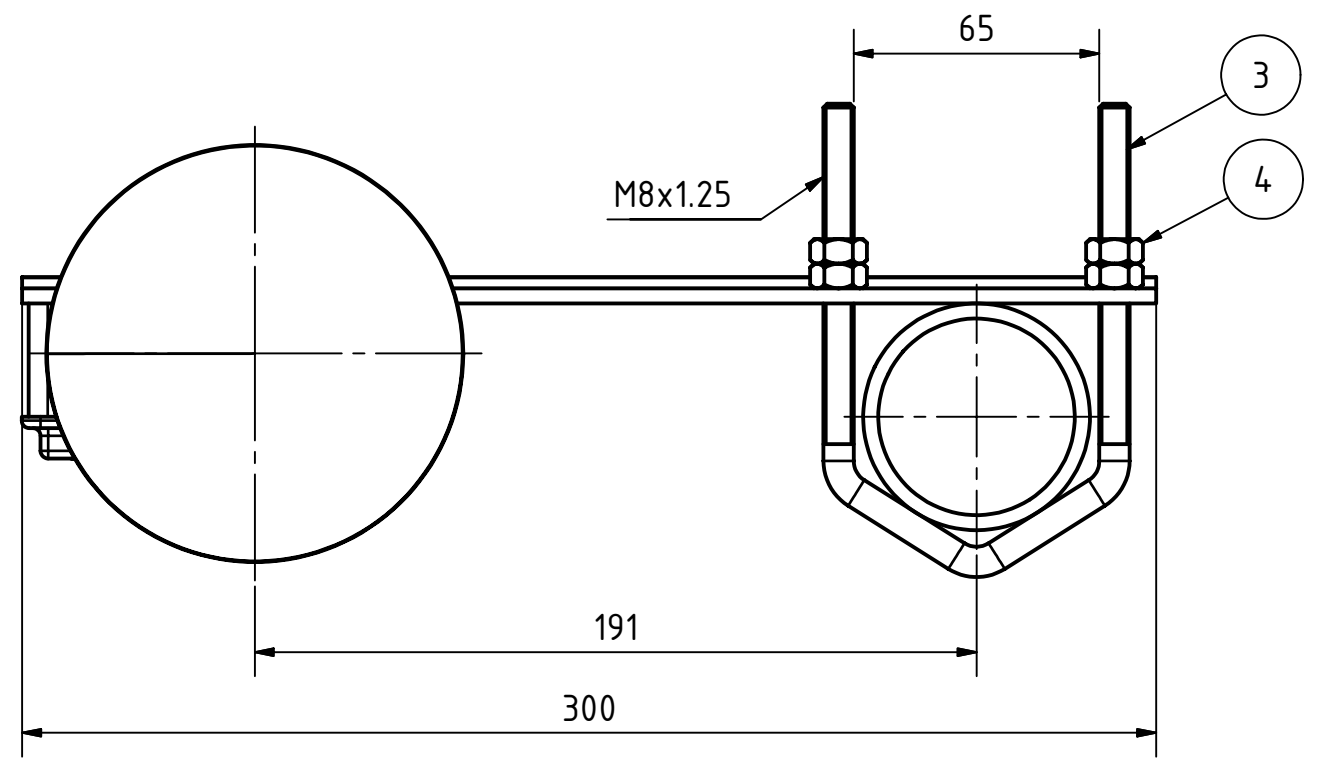
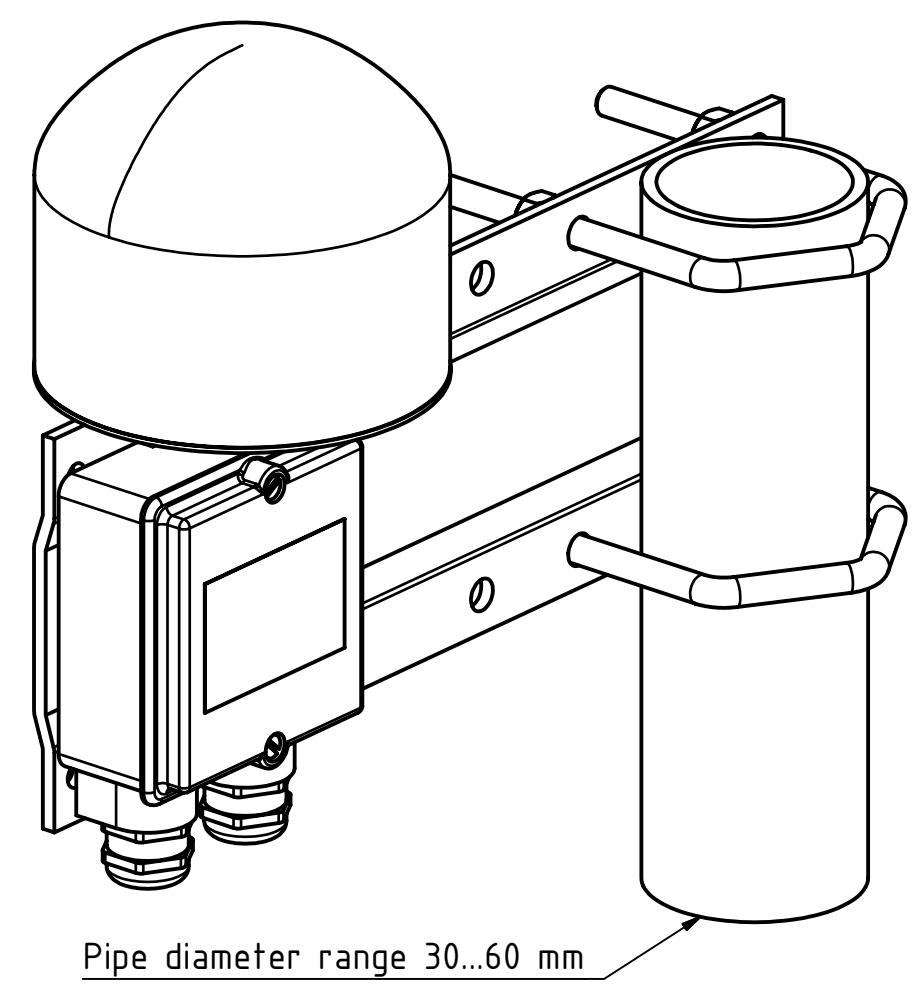
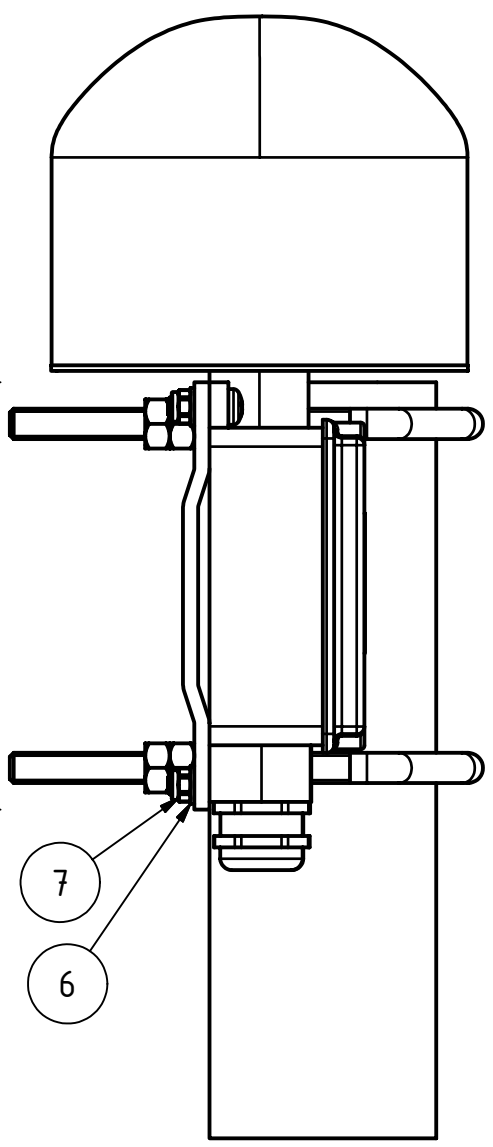
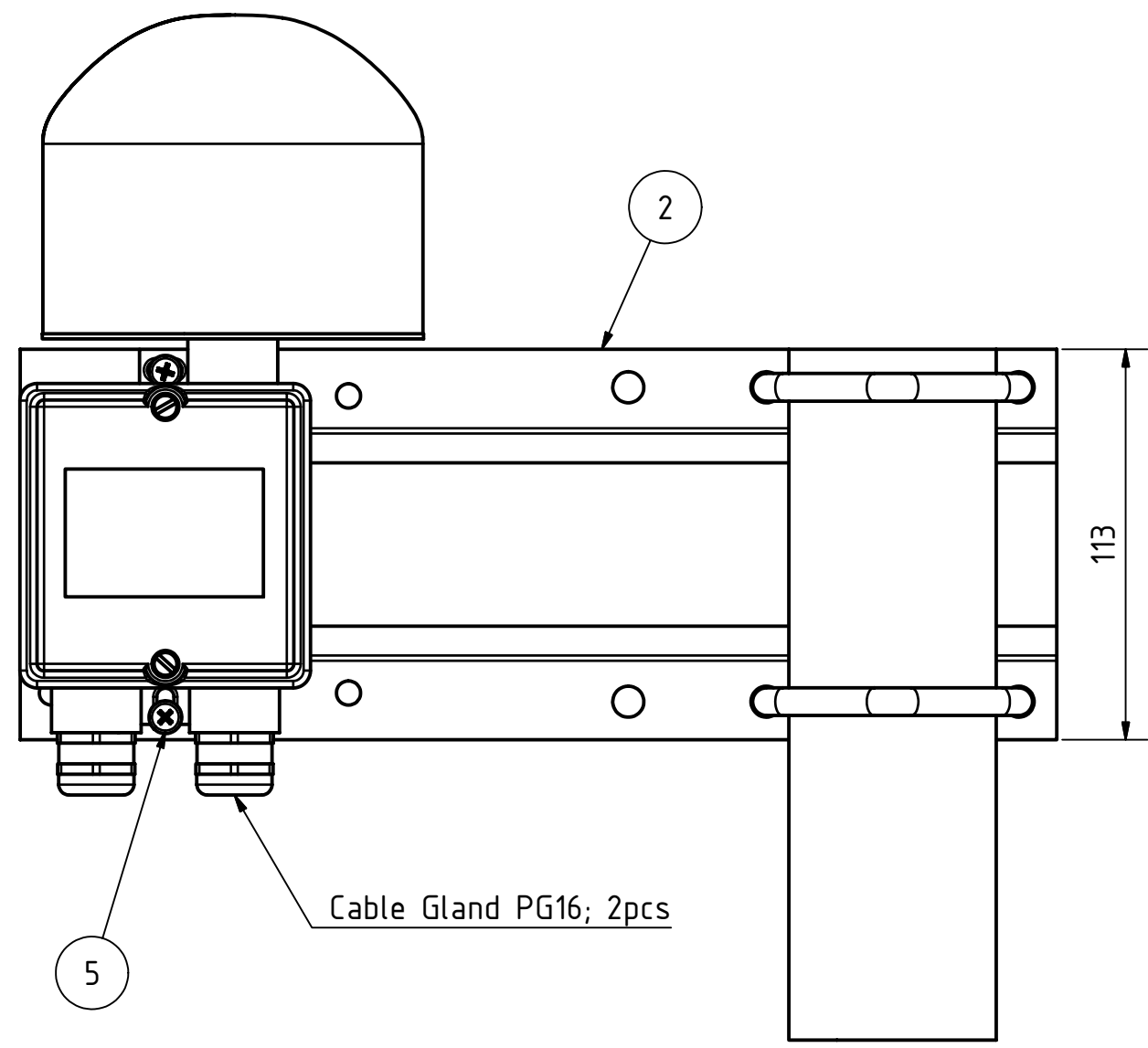


TÄMÄ PIIRUSTUS ON OBELUX OY:N OMAISUUTTA, EIKÄ SITÄ SAA ILMAN LUPAAMME JÄLJENTÄÄ TAI LUOVUTTA A KOLMANNELLE OSAPUOLELLE.
 WE OBELUX OY ARE THE OWNER OF THIS DOCUMENT WHICH MUST NOT, WITHOUT OUR PERMISSION, BE COPIED OR GIVEN TO A THIRD PARTY.



MOUNTING SET ORDER CODE: OBELUX MS-60

BILL OF MATERIAL				
ITEM	QTY	PART NUMBER	DESCRIPTION	MATERIAL
2	1	X001131	BRACKET	Aluminum, Anodized
3	2	X000118	U-BOLT M8	AISI 316
4	8	X000131	HEX NUT M8 DIN 934	Type AISI 316
5	2	X000141	M5x16 ISO7045	Type AISI 316
6	2	X000138	WASHER	Type AISI 316
7	2	X000140	LOCK NUT M5	Type AISI 316

FIRST ANGLE	MERKITSEMATTOMAT KONEISTUSTOLERANSSIT SFS EN 22768-m UNMARKED MACHINING TOLERANCES ACC. TO SFS EN 22768-m	0.5<X≤3 ± 0.1	3<X≤6 ± 0.1	6<X≤30 ± 0.2	30<X≤120 ± 0.3	120<X≤400 ± 0.5
	PAINO WEIGHT	KG	SUHDE SCALE 1:2	PVM DATE 23.11.2005	SUUNN DESIGNED ATu	HYV APPR

OBELUX MS-60 ASENNUSSARJA PYSTYPUTKEEN JATKOLEVYLLÄ EXTENDED MOUNTING SET FOR VERTICAL PIPE		VANHA OLD NO -	UHISI NEW NO -
A3		A1001010	

OBELUX	WWW.OBELUX.COM	HELSINKI FINLAND	GENERATED WITH INVENTOR 10	SHEET 1	MICROFILM MUUTOS ISSUE
--------	----------------	---------------------	-------------------------------	------------	---------------------------