

DATASHEET

High-Intensity 100 000cd SAL

ICAO High-Intensity Type B 100 000cd

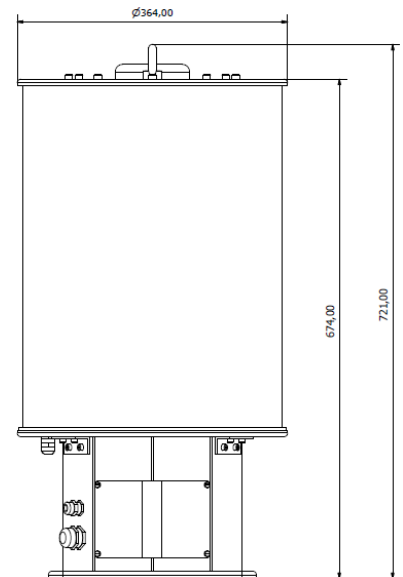
OBELUX
 AVIATION LIGHTS

Obelux Oy, Kutomatie 6 B, 00380 Helsinki FINLAND | The information in this document is subject to change without notice.

© Obelux Oy 2014

Optical Characteristics

- ▶ 100 000cd Flashing @ Day
- ▶ 20 000cd Flashing @ Twilight
- ▶ 2 000cd Flashing @ Night
- ▶ Colour aviation WHITE
- ▶ Horizontal radiation pattern 360°
- ▶ Vertical beam 3°



High-Intensity 100 000cd Stand-Alone

LED Aviation Obstruction Lights

Obelux high-intensity stand-alone light is designed for marking tall structures such as wind turbines, chimneys, masts, and towers. The product offers unique features such as fault monitoring, photocell and switcher incorporated in the light. Neither additional boxes nor controllers are required. Obelux uses a unique environmental friendly optical solution which minimizes light pollution to the neighbourhood.

Specifications met

ICAO International Standards and Recommended Practices:
 Aerodromes Annex 14 Volume 1,
 5th Edition, July 2009, Chapter 6:
 High-intensity Type B

Key Features

- ▶ Based on LED-technology
- ▶ 100 000cd WHITE flashing light
- ▶ Incorporated photocell and fault monitoring
- ▶ GPS synchronization and Ethernet connection on request
- ▶ More than 10 years of maintenance free operating time
- ▶ 5 year warranty

DATASHEET

High-Intensity 100 000cd SAL

ICAO High-Intensity Type B 100 000cd

OBELUX
 AVIATION LIGHTS

Obelux Oy, Kutomotte 6 B, 00380 Helsinki FINLAND | The information in this document is subject to change without notice.

© Obelux Oy 2014

Electrical Characteristics

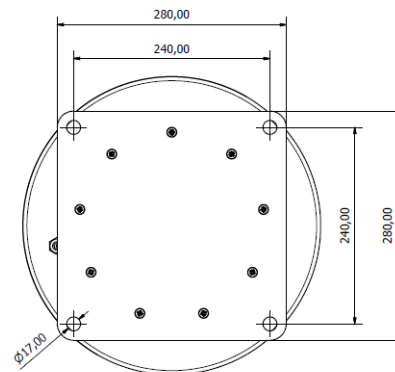
- ▶ Operating voltages 115 or 230V_{AC}
- ▶ Constant power input by active PFC
- ▶ Flash rates: 20 and 40 fpm
- ▶ Meets standards
 - EMC (Emissions): EN 61000-6-4
 - EMC (Immunity): EN 61000-6-2
- ▶ Power consumption (40 fpm)
 - 275W @ Day
 - 55W @ Twilight
 - 23W @ Night
- ▶ Recommended cables:
 - Power: 3x2,5mm² (Outdoor) L-N-PE
 - Data: CAT 7 (Outdoor)
 - Alarm: CAT 7 (Outdoor)

Additional Factory-Installed Options

- ▶ GPS flash synchronization
- ▶ Ethernet data interface
- ▶ NVG Compliant infrared
- ▶ RED color 2 000cd for night time
(Item No. HI-100KWD-xxx-A)

Mechanical Characteristics

- ▶ Anodised marine grade aluminium body
- ▶ Glass cover
- ▶ Degree of protection IP65
- ▶ Operating temperature range -40...+55 °C
- ▶ Mounting 240x240mm, ϕ 17
- ▶ Height 721 mm, diameter 364 mm
- ▶ Weight 41 kg



Order code	Output	ICAO	Op. volt.	Pow. cons.	Fault monitoring	Packing dimensions
HI-100KW-230-A	100 000cd	Type B	230VAC	280 VA	Yes	800x600x400, 50kg
HI-100KW-115-A	100 000cd	Type B	115VAC	280 VA	Yes	800x600x400, 50kg
HI-100KWD-230-A	100 000cd	Type B	230VAC	280 VA	Yes	800x600x400, 50kg
HI-100KWD-115-A	100 000cd	Type B	115VAC	280VA	Yes	800x600x400, 50kg

Additional options

- OPT-GPS (GPS synch.)
- OPT-IR (Infrared)
- OPT-ETH (Ethernet)